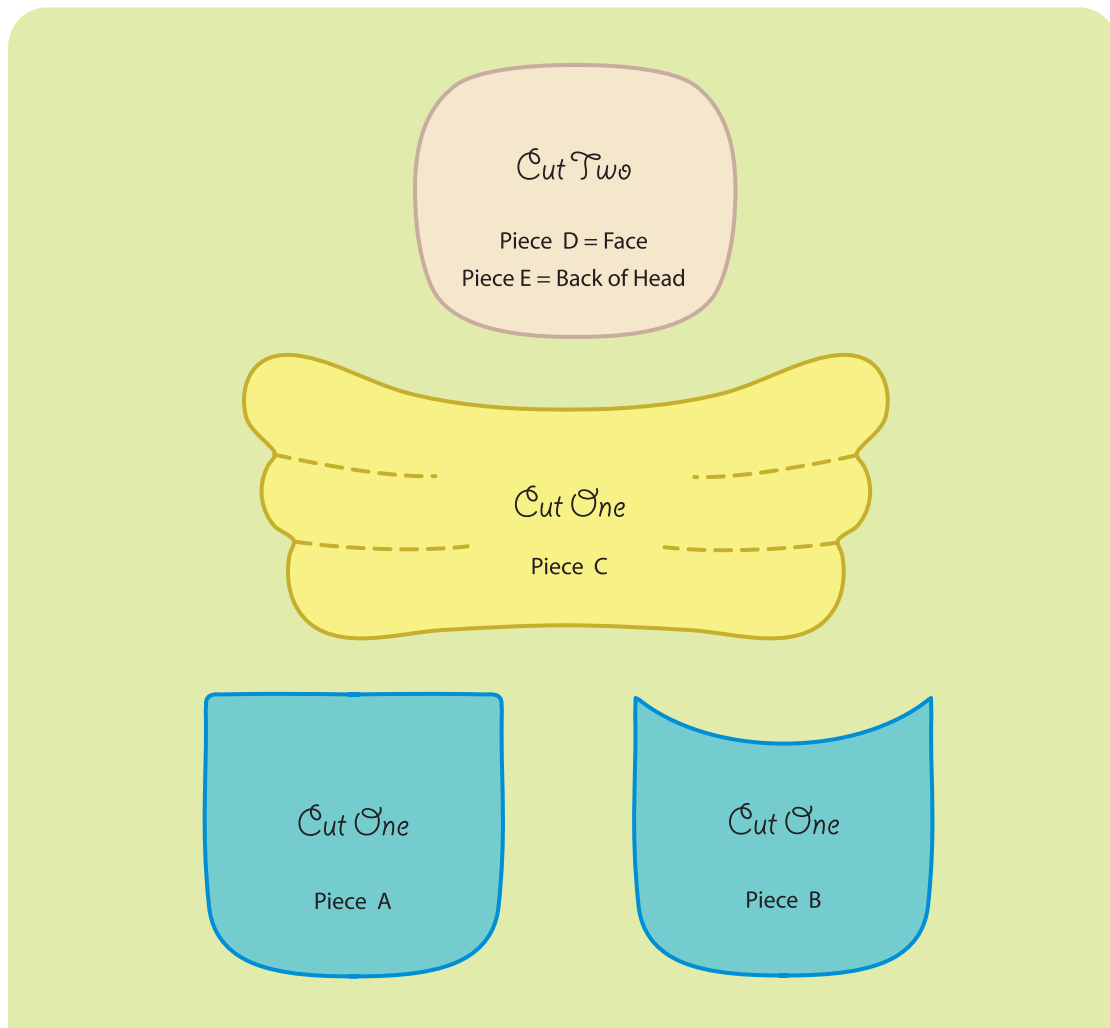


Tooth Fairy Pouch Pattern and Tutorial

Copyright 2007 Joan Gorman



Tip

This is such a simple project with little need to be accurate it would make a very good starter sewing project for children.

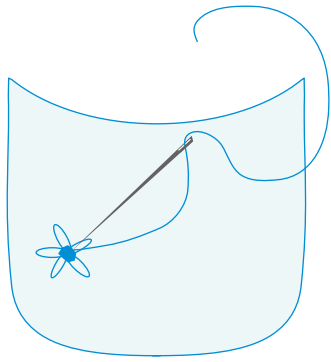
Use a running stitch throughout, enlarge the pattern a bit so their less dextrous hands have larger pieces to hold and be sure to not make the thread too long to avoid knots. If there are any gaps that the tooth could fall through just add a bit of glue between stitches.

ANOTHER TIP! If stitching is way too frustrating for you or your little one, use craft glue for the whole thing and forget the sewing!

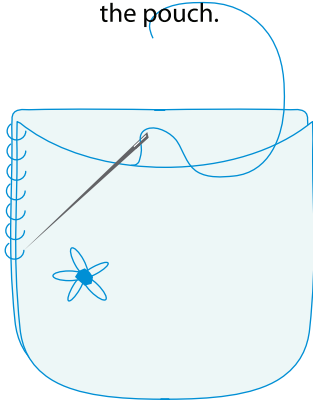
Supplies

- * Scissors
- * Three colours of felt
- * Embroidery floss, matching or contrasting colours
- * Embroidery needle
- * Optional: Decorations, flowers, sequins, beads, wool for hair, buttons, etc.

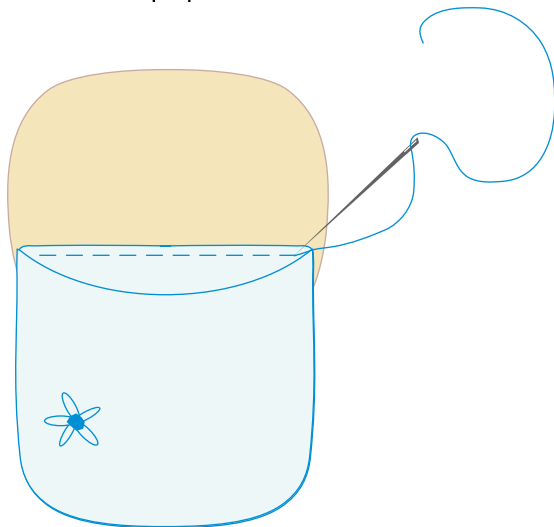
This pattern is offered for non-commercial use only. Please do not sell this pattern or items made from it.



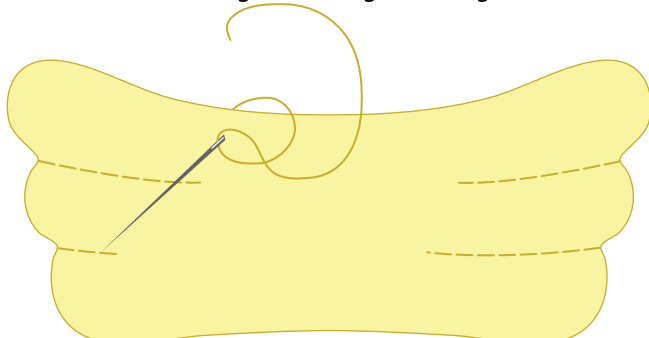
Stitch decorations to the front of the pouch.



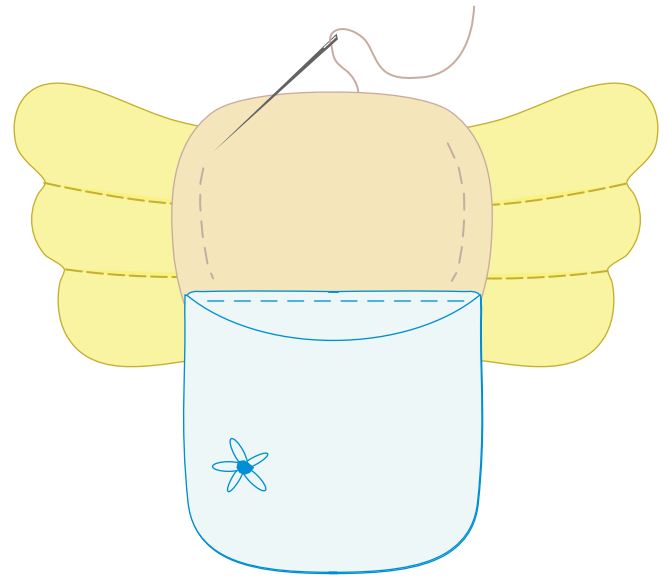
Stitch the back of the pouch (A) and the front of the pouch (B) together using a whip stitch or a blanket stitch around the edge leaving the top open.



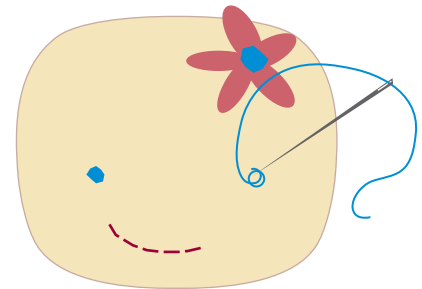
Place the pouch onto the back piece of the head (E) about a third from the bottom of the head and sew them together using a running stitch.



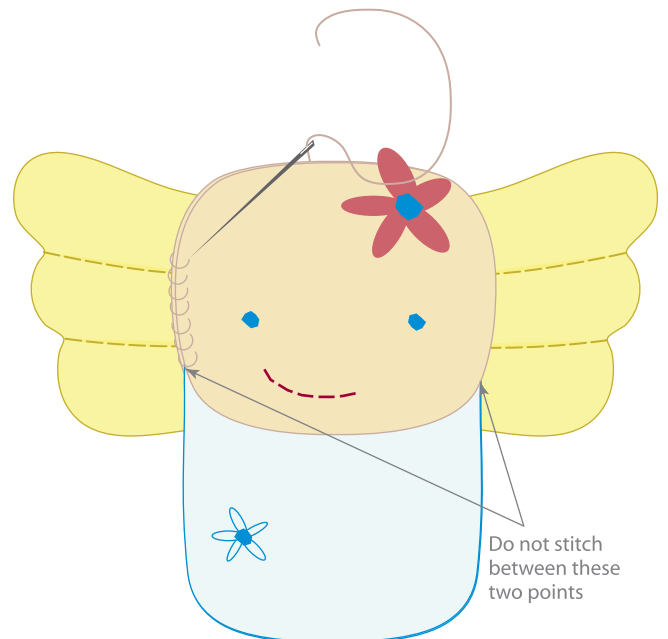
For definition in the wings (C), embroider curved lines using a simple chain stitch.



Stitch the wings (C) behind the head using a running stitch.



Then using French knots, stitch two eyes on the face (D) and chain stitch a mouth and any other decorations you wish - I stitched on a flower cut out of fabric.



Now whip stitch the face (D) to the back of the head (E) leaving the bottom third open to lift, exposing the pouch. Finished!